

DOORS NETWORK SETUP GUIDE

INTRODUCTION	1
SETTING UP YOUR NETWORK	2
OVERVIEW	2
Installing Doors as a Server	3
NETWORK SETUP DIALOG	3
Installing Doors as a Workstation	4
Installing Doors as a Laptop	6
MODIFYING YOU NETWORK	8
TECHNICAL INFORMATION	8
Doors Files and Folders	8

INTRODUCTION

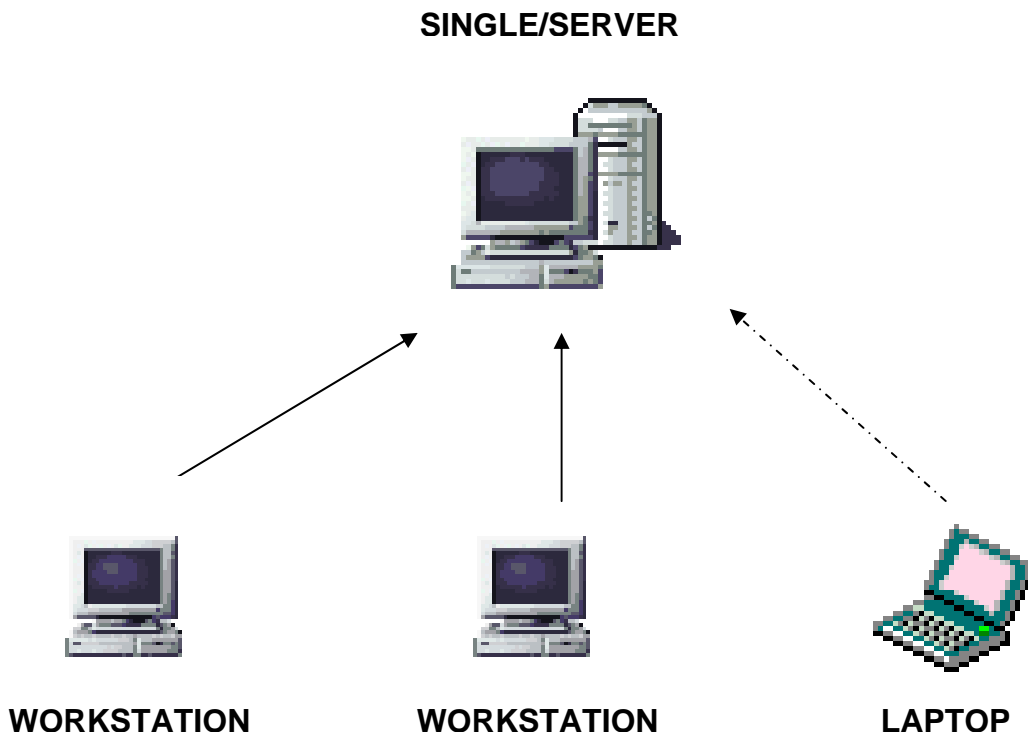
There are three computers roles involved in the Doors network:

The Server – this computer contains all of the data belonging to Doors, and makes it available to workstations and laptops. There is only one server.

The Workstation – this computer runs Doors, but the data (eg. Projects, General Inventory List) is accessed from the server. There may be one or more workstations.

The Laptop – this is equivalent to the Workstation, but it also maintains a local copy of the data so that you can use Doors when the laptop is not connected to the server.

The following diagram illustrates the Doors network.



SETTING UP YOUR NETWORK

OVERVIEW

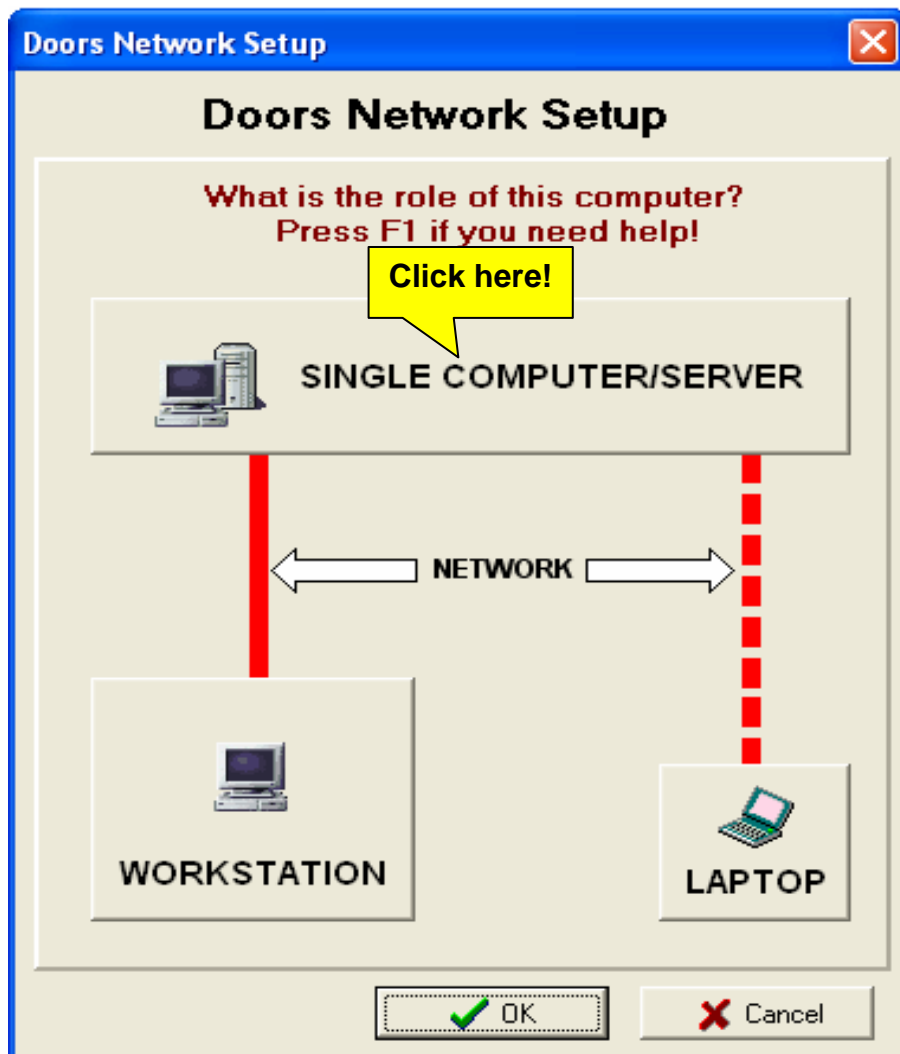
Overview of steps for a installing doors onto a network :

- 1) Install Doors onto the server computer. Once installed, run it and choose the Single Computer/Server setup type.
- 2) Then, for each workstation computer :
 - a) Install Doors onto the workstation.
 - b) Run doors from the workstation computer and choose the Workstation setup type (you will be prompted to enter the location of the Doors server installed in step 1).
- 3) For each laptop :
 - a) Install Doors onto the laptop.
 - b) If the laptop is not already connected to the server, please connect it now.
 - c) Run doors from the laptop and choose the Laptop setup type (you will be prompted to enter the location of the Doors server installed in step 1).

Installing Doors as a Server

Before proceeding, please ensure that you:

- Have a Doors installation CD, or installation files downloaded from the internet.
 - Are at the server terminal.
 - Have logged in as an administrator.
 - Have considered the security and networking policies that are implemented on the server as they apply to the installation of a new software application. This is only generally applicable for larger networks or networks with every resource shared.
1. Install Doors as normal using either from the installation CD, or the installation files downloaded from the internet. The default installation folder is C:\DoorsPro, but you may choose to place doors elsewhere depending on your requirements.
 2. Once the installation has completed, run Doors. The following dialog will be shown. Choose the Single Computer/Server option.



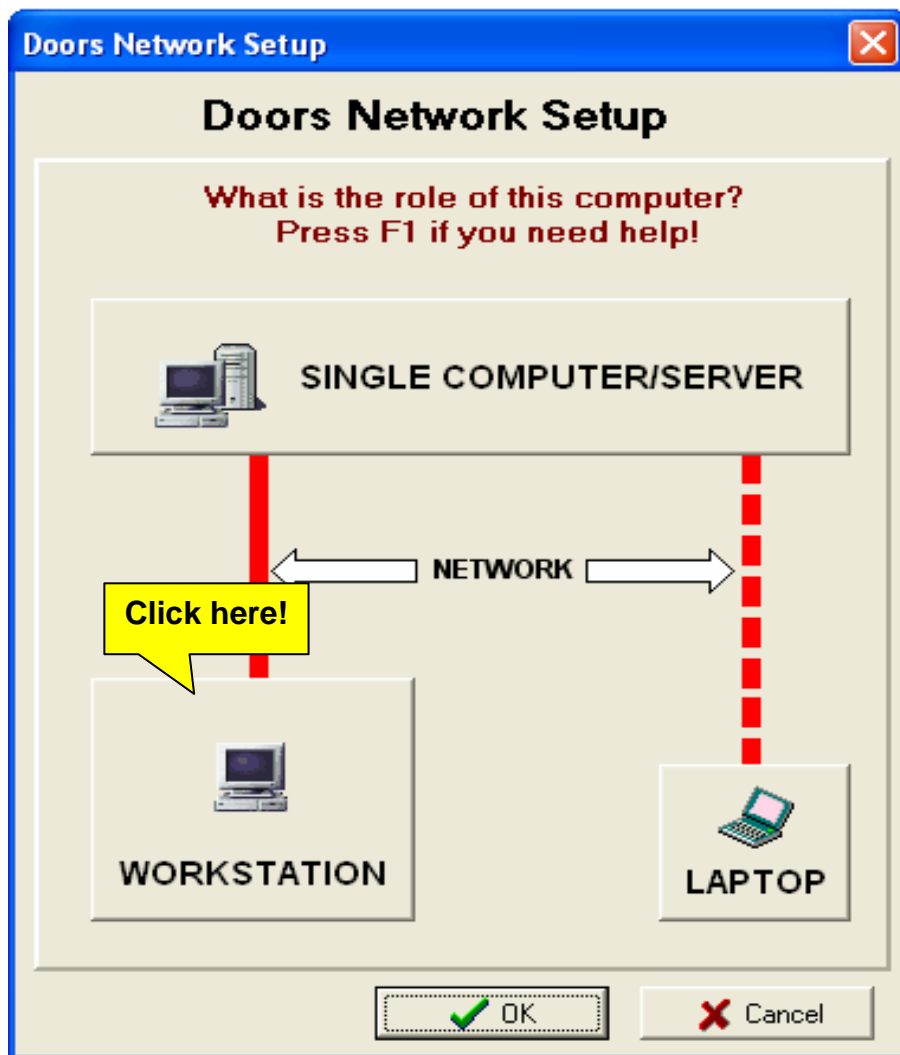
NETWORK SETUP DIALOG

3. Nothing else is required to set up Doors, but there are some networking issues to take care of. You must make the Doors data available to other computers on the network. This generally involves creating a network share for the Doors installation folder (typically C:\DoorsPro). Creating a network share is beyond the scope of this document as it depends on the operating system you are running on the server, as well as the security policies you have set up on your network. If you are unsure of how to do this, please contact your network administrator.

Installing Doors as a Workstation

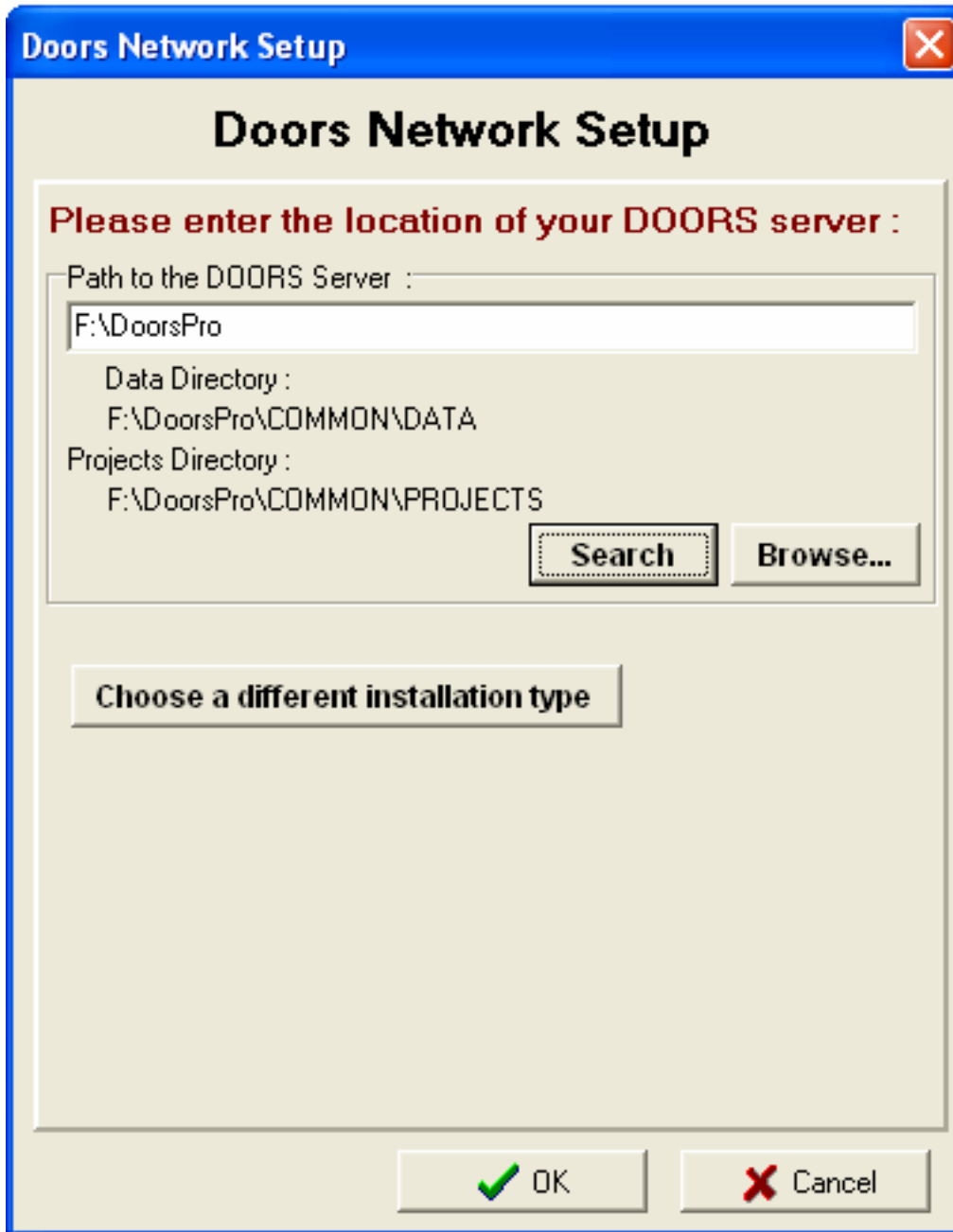
Before proceeding, please ensure that you:

- Have a Doors installation CD, or installation files downloaded from the internet.
 - Are at the workstation terminal.
 - Have logged in as an administrator.
 - Have ensured that Doors has been installed on the server, and that it is available via a network share. Please consult your network administrator if you are unsure of this.
1. Install Doors as normal using either from the installation CD, or the installation files downloaded from the internet. The default installation folder is C:\DoorsPro, but you may choose to place doors elsewhere depending on your requirements.
 2. Once the installation has completed, run Doors. The following dialog will be shown. Choose the Workstation option.



NETWORK SETUP DIALOG

3. The following screen is will be shown. You will now be required to specify where the Doors Server data is located.

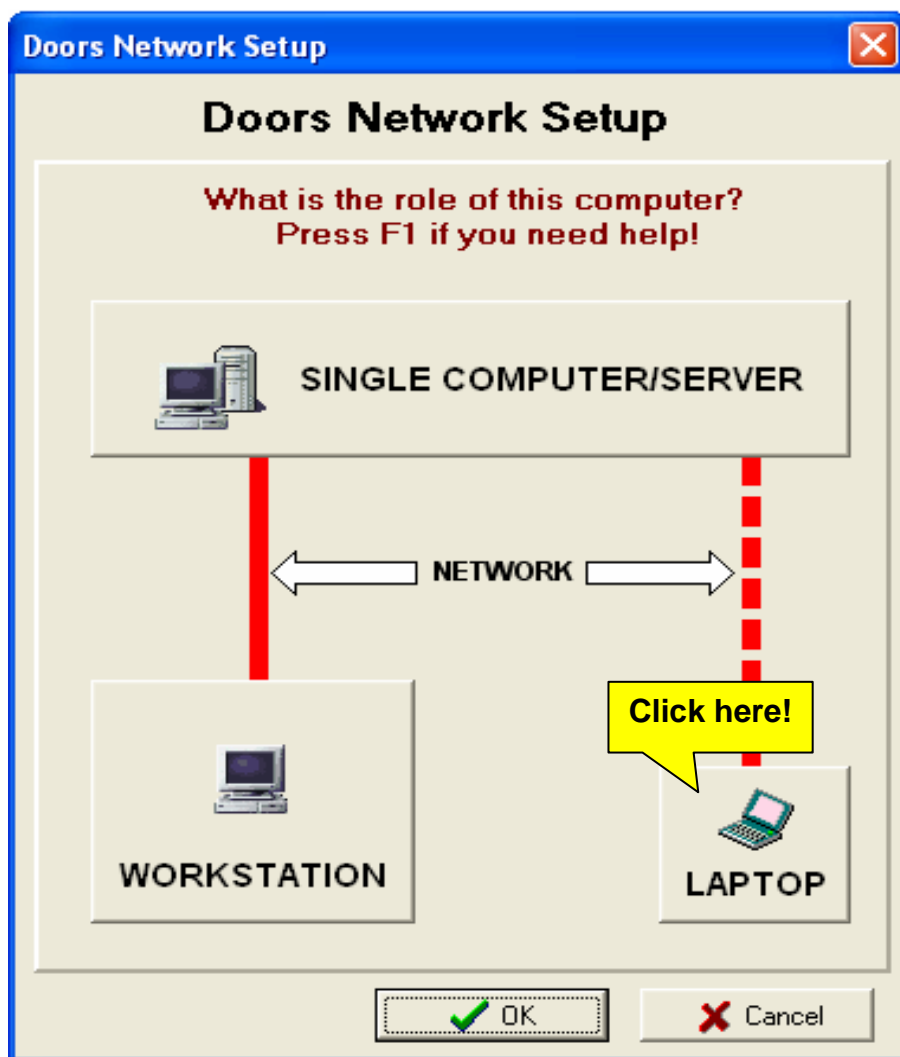


4. Click the Search Button to automatically find the Doors Server. This is easiest method, but if it does not find the Server, you will need to select the browse button and specify it manually (specify the root doors folder on the server and not any of the subfolders like common or work).
5. Click the OK button at the button when the server has been specified. This will complete the installation of the Workstation.

Installing Doors as a Laptop

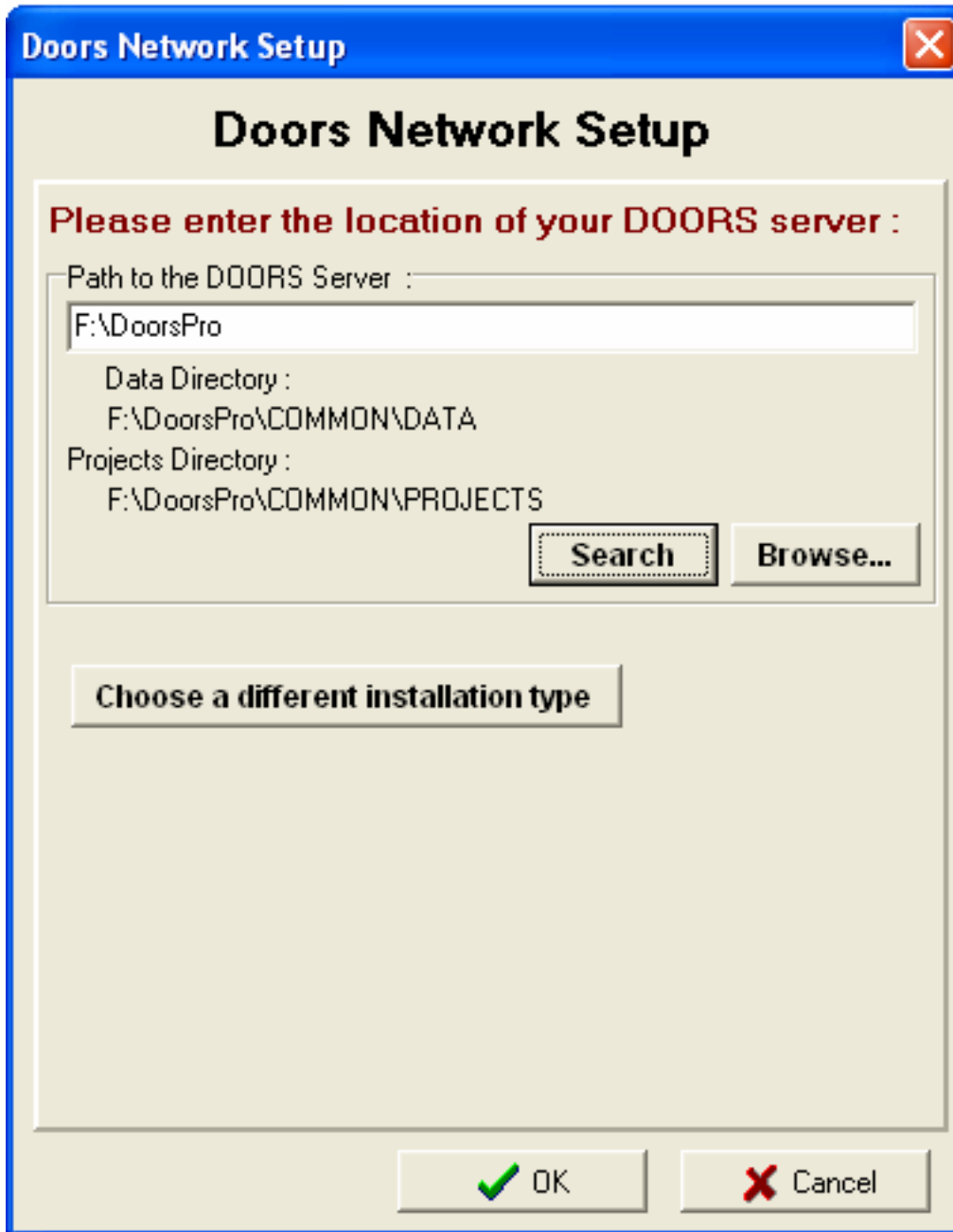
Before proceeding, please ensure that you:

- Have a Doors installation CD, or installation files downloaded from the internet.
 - Are at the laptop computer.
 - Have logged in as an administrator.
 - Have logged onto the network.
 - Have ensured that Doors has been installed on the server, and that it is available via a network share. Please consult your network administrator if you are unsure of this.
3. Install Doors as normal using either from the installation CD, or the installation files downloaded from the internet. The default installation folder is C:\DoorsPro, but you may choose to place doors elsewhere depending on your requirements.
 4. Once the installation has completed, run Doors. The following dialog will be shown. Choose the Laptop option.



NETWORK SETUP DIALOG

6. The following screen is will be shown. You will now be required to specify where the Doors Server data is located.



7. Click the Search Button to automatically find the Doors Server. This is easiest method, but if it does not find the Server, you will need to select the browse button and specify it manually (specify the root doors folder on the server and not any of the subfolders like common or work).
8. Click the OK button at the button when the server has been specified. This will complete the installation of the Laptop.

Please note that before you disconnected or reconnect to the network, you must close Doors down on the laptop computer.

MODIFYING YOUR NETWORK

Run Doors, under software menu, choose Network Configuration. Refer above for information on the type of network setup to choose.

TECHNICAL INFORMATION

Doors Files and Folders

File/Folder	Location	Description
Doors.RGY	Doors Root Folder	Doors registry settings. This file may be deleted to restore the default settings when you next run Doors.
NetPath.Cfg	Doors Root Folder	Doors network configuration. This file can be edited in Notepad. This file may also be deleted to bring up the Network Configuration dialog when you next run Doors.
DOORS.HLP	Doors Root Folder	Doors Help File
DoorsPro.exe, DoorsStd.exe	Doors Root Folder	Doors Application
Finishes.Fil	Doors Root Folder	Contains the list of finishes used when creating new products.
GridOptn.ini	Doors Root Folder	Contains customisation information for Doors Grids/Lists. This file may be deleted.
Hlp256.dll	Doors Root Folder	Support DLL for Doors help.
PDFOutput.BCF	Doors Root Folder	Support file for Doors.
Reports.ini	Doors Root Folder	Contains user report options. This file may be deleted.
TUtil32.dll	Doors Root Folder	Support file for Doors.
Common Folder	Doors Root Folder	Contains all the data which is shared amongst Doors.
Data Folder	Common Folder	Contains all the paradox tables which are shared amongst Doors.
Projects Folder	Common Folder	Contains all the Doors projects
NetFile Folder	Common Folder	Contains files used by paradox networking.
SavedReports Folder	Doors Root Folder	Contains reports saved by Doors.
Work Folder	Doors Root Folder	Contains the data files for the project currently open by Doors.