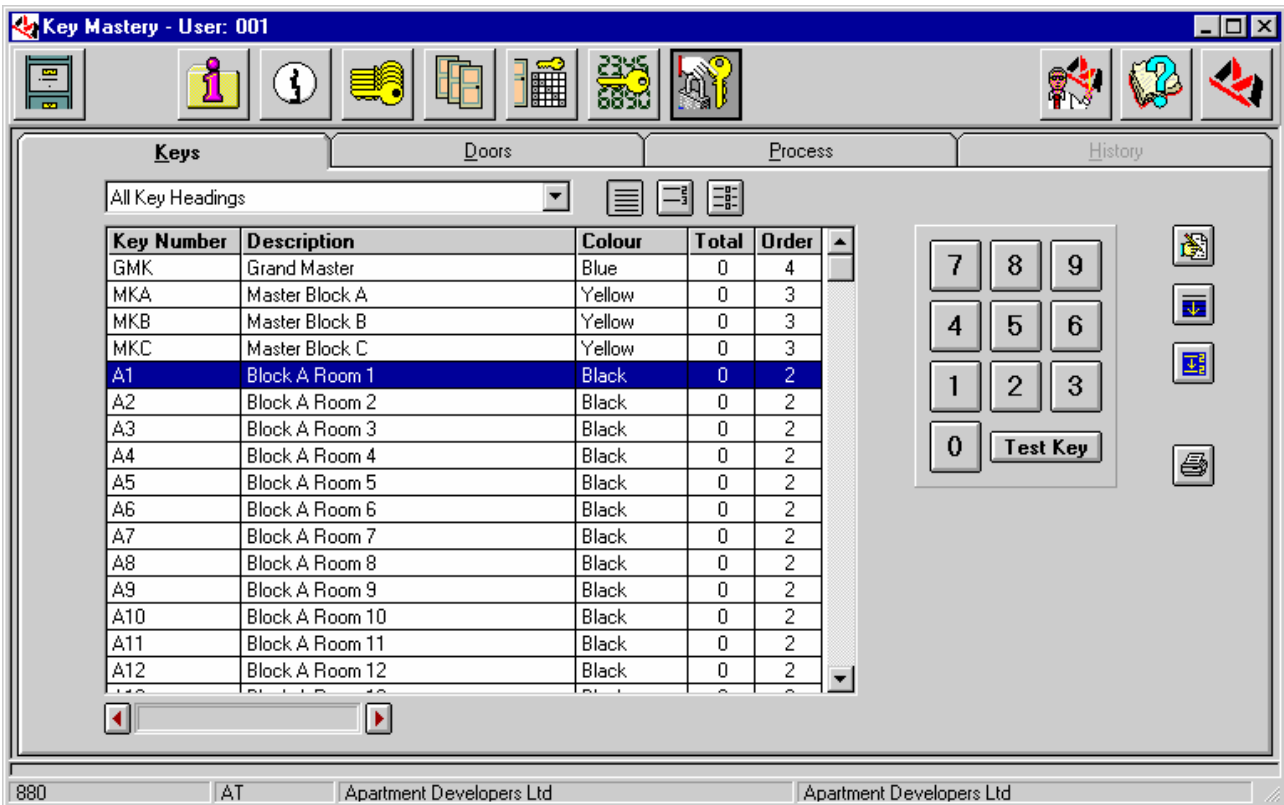
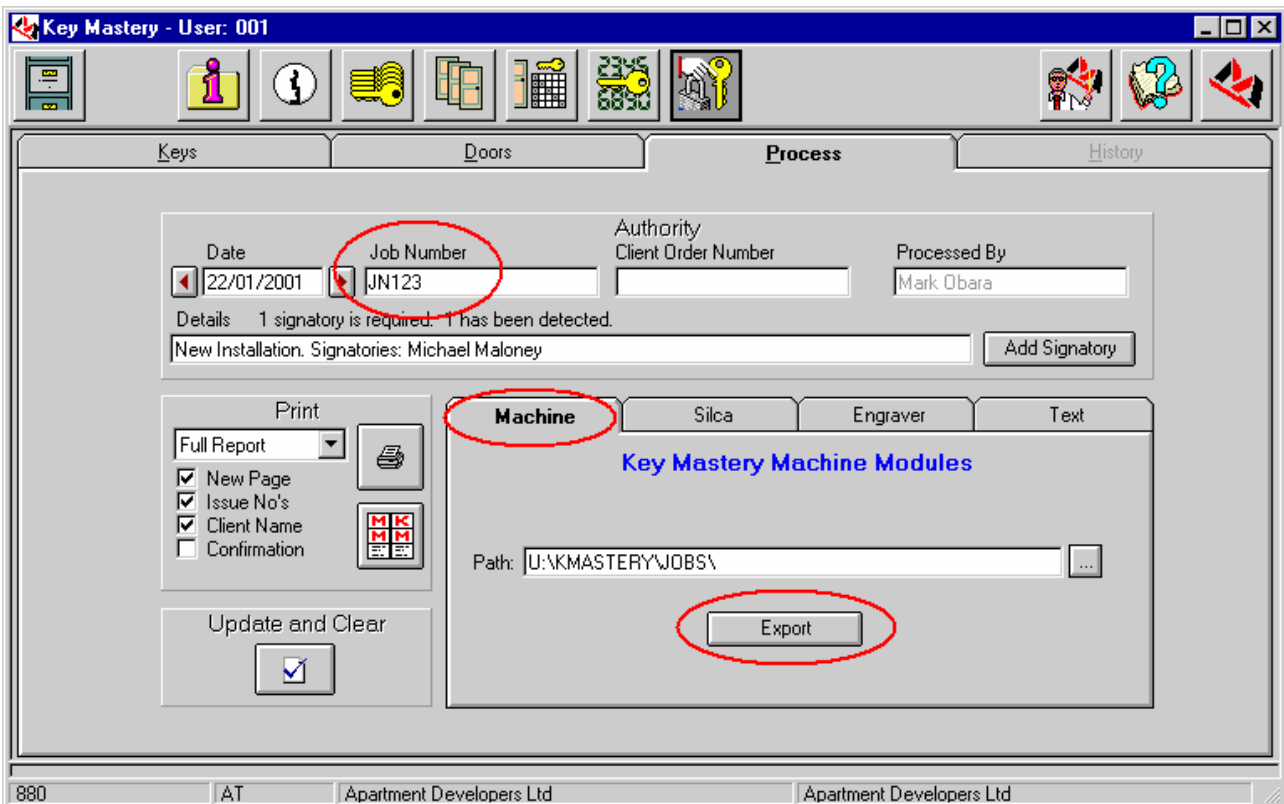


Unocode Module

In Key Mastery, enter the quantity of key copies required:



Ensure a Job Number is entered, and click the Export button under the Machine tab.



A file will be created using a combination of the file number and job number, and placed into the Jobs folder. In this case it would be 880_JN123.KMD.

Run KM Unocode



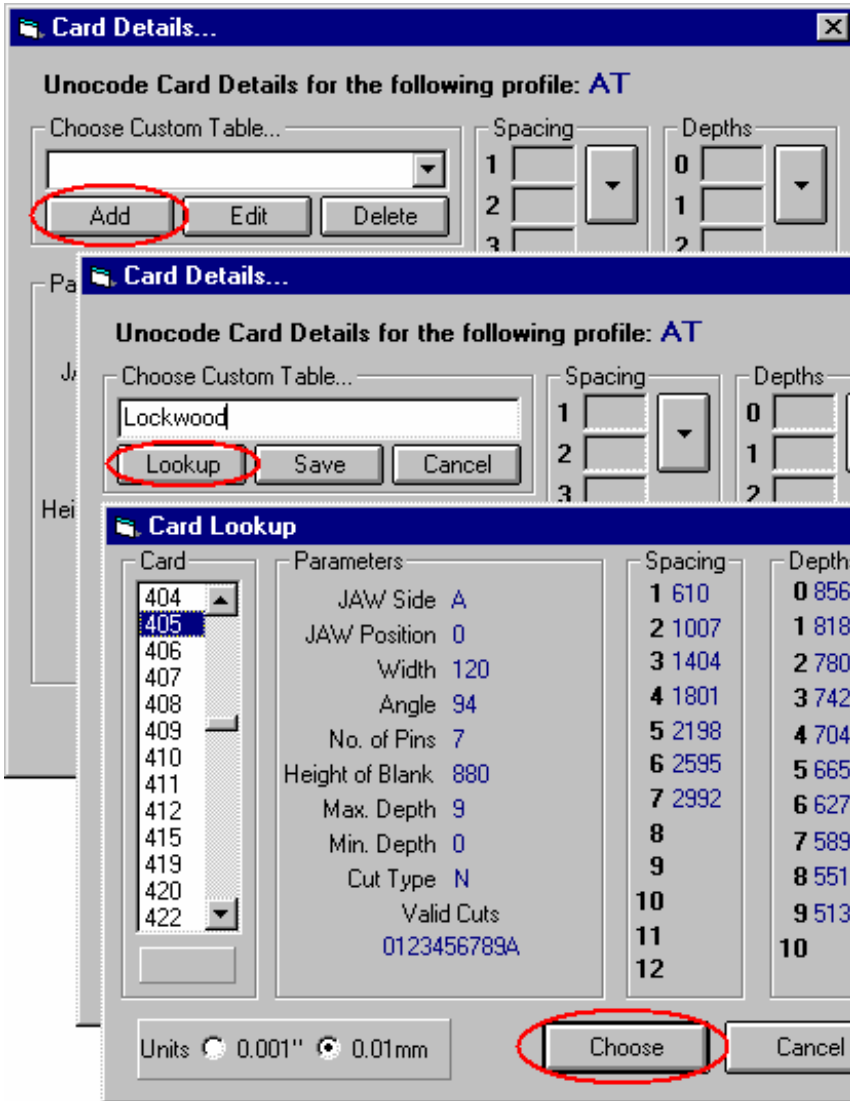
Click on the setup button.

Ensure that all settings are correct and register the software.

Key No.	Description	Ordered	Sent
GMK	Grand Master	4	0
MKA	Master Block A	3	0
MKB	Master Block B	3	0
MKC	Master Block C	3	0
A1	Block A Room 1	2	0
A2	Block A Room 2	2	0
A3	Block A Room 3	2	0
A4	Block A Room 4	2	0
A5	Block A Room 5	2	0
A6	Block A Room 6	2	0
A7	Block A Room 7	2	0
A8	Block A Room 8	2	0
COPIES		613	0
KEYS		304	0

Click on the Refresh button, which will bring up your job.

Click on the Change button to select or edit the Card Settings.



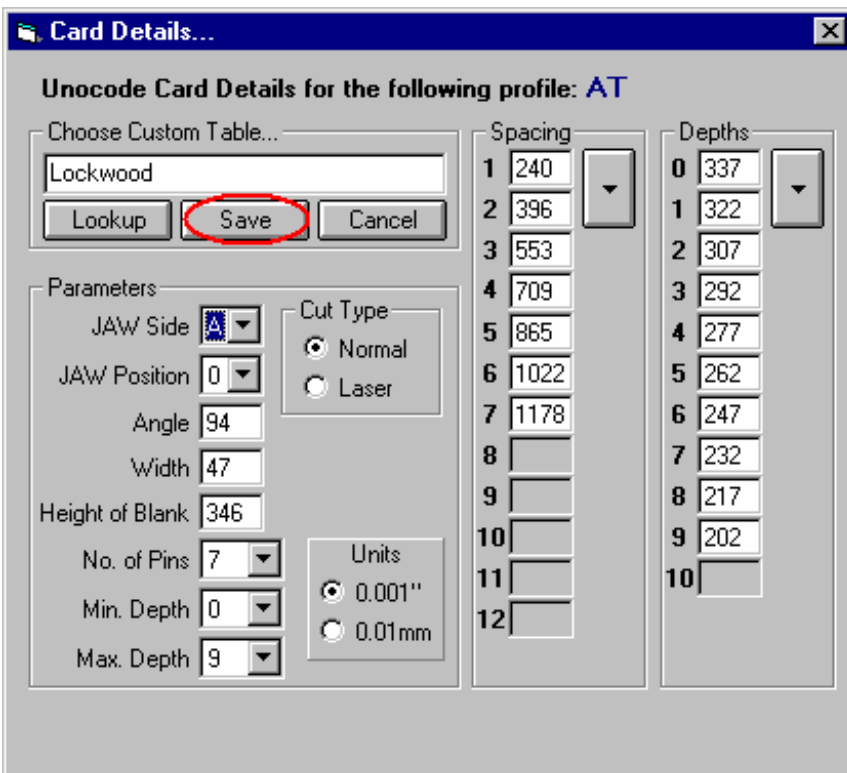
Each Profile retains its own settings called Tables.

Click on the Add button to select setting for the current profile.

Enter a Table name to easily identify it in the future.

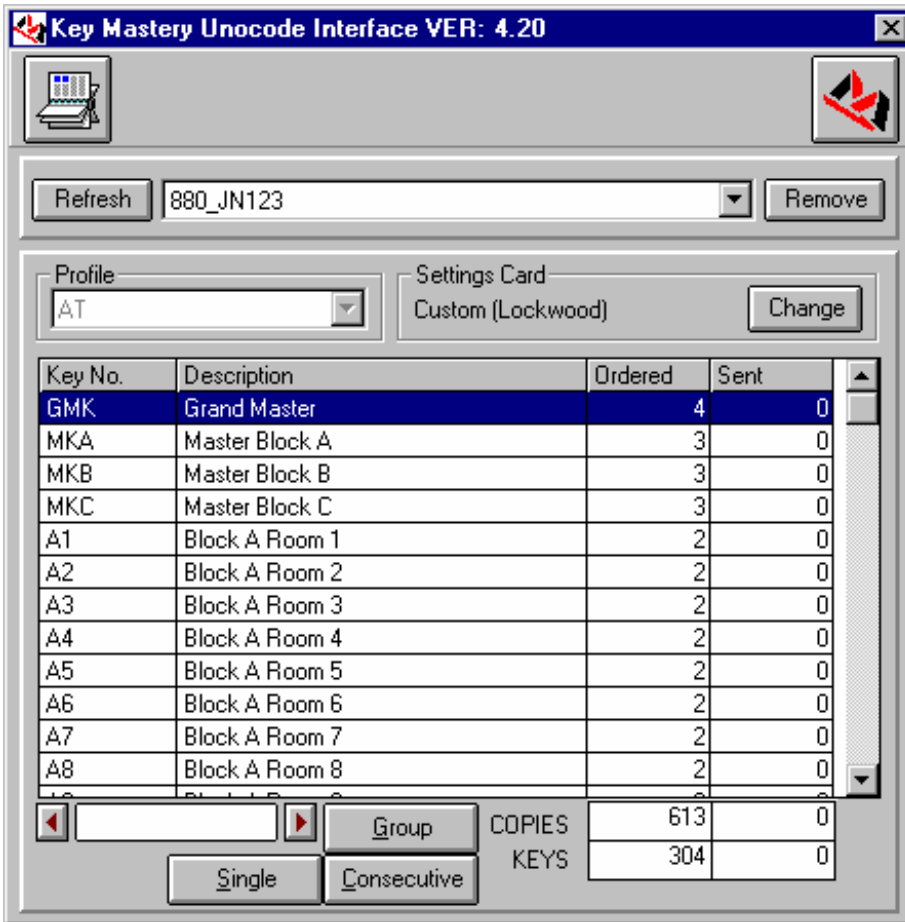
If the card number is known, then you can select it from the Lookup list.

Otherwise, you can manually enter the details yourself using the Edit button



This table can now be saved and recalled for future profiles with the same settings.

Any future job with the same profile will automatically assume the same settings.



The keys are now ready to send to the Unocode.

There are 3 options for sending the keys:

Group: This will send up to 100 keys at a time to the machine.

Single: Sends the keys one at a time.

Consecutive: Sends each key and waits for that key to be cut before sending the next key automatically.

The software retains the information on what was sent in case you need to interrupt the process to use the machine for cutting other keys.

You can also swap between jobs if an urgent order comes in.

Key No.	Description	Ordered	Sent
GMK	Grand Master	4	4
MKA	Master Block A	3	3
MKB	Master Block B	3	3
MKC	Master Block C	3	3
A1	Block A Room 1	2	2
A2	Block A Room 2	2	2
A3	Block A Room 3	2	1
A4	Block A Room 4	2	0

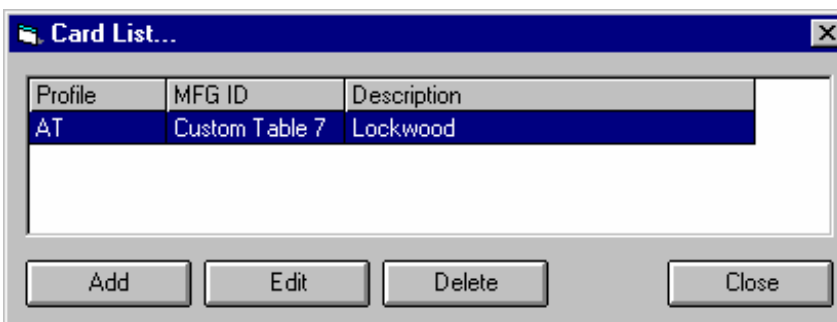
If any keys are not cut correctly, you can edit the number in the Sent column with the Enter key on your keyboard, the balance of which will be sent again.

You can also clear the sent quantity with the Delete on your keyboard.

When the job has been completed, the Remove button will delete the file from the list.



Machine Settings Card Button



Allows you to manage your list of Settings Cards.